

RESEARCH ARTICLE

Open Access

# The model marine diatom *Thalassiosira pseudonana* likely descended from a freshwater ancestor in the genus *Cyclotella*

Andrew J Alverson<sup>1\*</sup>, Bánk Beszteri<sup>2</sup>, Matthew L Julius<sup>3</sup> and Edward C Theriot<sup>4</sup>

## Abstract

**Background:** Publication of the first diatom genome, that of *Thalassiosira pseudonana*, established it as a model species for experimental and genomic studies of diatoms. Virtually every ensuing study has treated *T. pseudonana* as a marine diatom, with genomic and experimental data valued for their insights into the ecology and evolution of diatoms in the world's oceans.

**Results:** The natural distribution of *T. pseudonana* spans both marine and fresh waters, and phylogenetic analyses of morphological and molecular datasets show that, 1) *T. pseudonana* marks an early divergence in a major freshwater radiation by diatoms, and 2) as a species, *T. pseudonana* is likely ancestrally freshwater. Marine strains therefore represent recent recolonizations of higher salinity habitats. In addition, the combination of a relatively nondescript form and a convoluted taxonomic history has introduced some confusion about the identity of *T. pseudonana* and, by extension, its phylogeny and ecology. We resolve these issues and use phylogenetic criteria to show that *T. pseudonana* is more appropriately classified by its original name, *Cyclotella nana*. *Cyclotella* contains a mix of marine and freshwater species and so more accurately conveys the complexities of the phylogenetic and natural histories of *T. pseudonana*.

**Conclusions:** The multitude of physical barriers that likely must be overcome for diatoms to successfully colonize freshwaters suggests that the physiological traits of *T. pseudonana*, and the genes underlying those traits, might differ from those of strictly marine diatoms. The freshwater ancestry of *T. pseudonana* might therefore confound generalizations about the physiological and metabolic properties of marine diatoms. The freshwater component of *T. pseudonana*'s history merits careful consideration in the interpretation of experimental data collected for this important model species.

**Keywords:** *Cyclotella nana*, diatom, freshwater, marine, model species, *Thalassiosira pseudonana*

## Background

Diatoms are unicellular photosynthetic algae with secondary, red-algal-derived plastids [1]. With total diversity estimates in the tens to hundreds of thousands of species, diatoms are one of the most diverse lineages of eukaryotes [2] and are critically important to the ecology of both marine and fresh waters. Marine diatoms alone account for roughly one-fifth of global net primary production [3]. Efforts to understand the ecology and evolution of diatoms

were catapulted forward when the first diatom genome, from a marine strain of *Thalassiosira pseudonana* (Hustedt) Hasle et Heimdal, was published in 2004 [4]. The genome revealed unanticipated metabolic pathways and gave a first glimpse into the mosaic nature of diatom nuclear genomes, which contain a mix of genetic material from the stramenopile host cell, diverse bacterial donors, and a succession of green and red algal endosymbionts [4-6].

In addition to its small (32 Mb) genome size, *T. pseudonana* was chosen for genome sequencing because it is generally considered representative of the large, widespread and predominantly marine genus *Thalassiosira* [4,7].

\* Correspondence: [alversoa@indiana.edu](mailto:alversoa@indiana.edu)

<sup>1</sup>Indiana University, Department of Biology, 1001 East Third Street, Bloomington, IN 47405, USA

Full list of author information is available at the end of the article

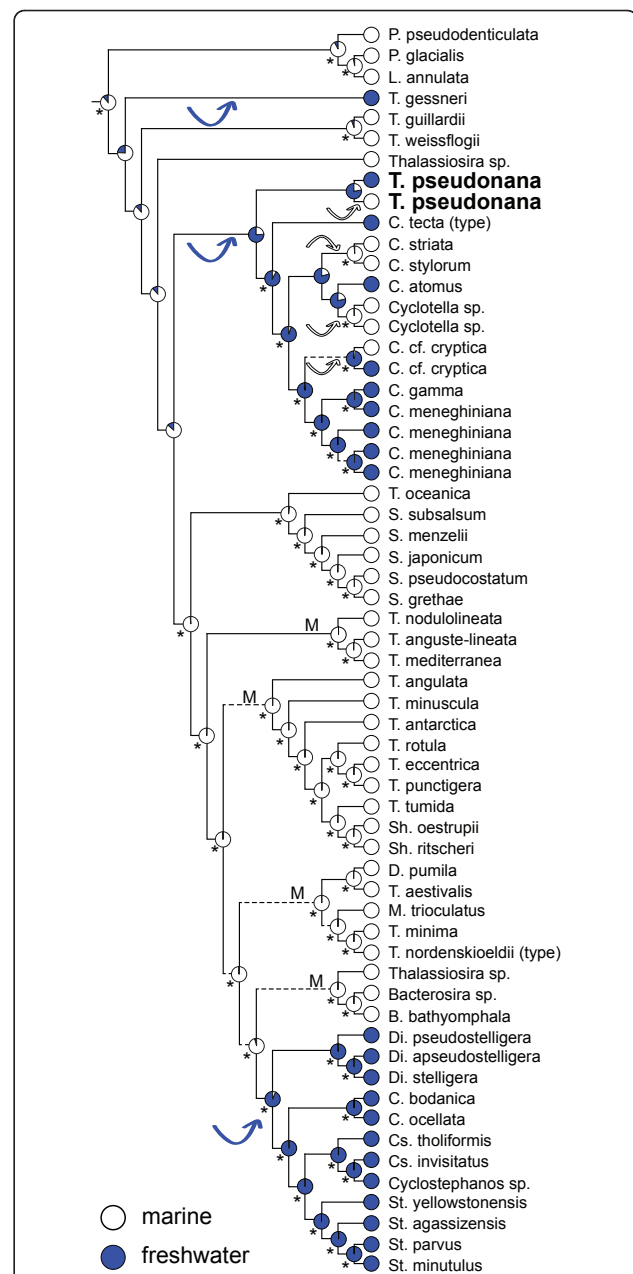
Although *T. pseudonana* has long been used in experimental studies [8-10], its genome sequence established it as the premier model for genome-enabled diatom research [11,12] on topics ranging from nutrient storage and metabolism [13-15] to silica biomineralization [16-19]. Data from these studies are often valued for their insights into the ecology and evolution of marine diatoms and, in turn, their determinant roles in the biogeochemical cycling of nutrients in the world's oceans [12]. Many of these inferences rest on the important assumption that *T. pseudonana* is a representative model for marine diatoms [20]. We summarize the phylogenetic and natural histories of *T. pseudonana* and show that it most likely descended from a freshwater ancestor. This portion of its history may have shaped several important physiological traits and the genes underlying those traits, confounding extrapolations to the biology of strictly marine diatoms. Finally, its relatively nondescript form and convoluted taxonomic history have introduced some confusion about the identity of *T. pseudonana* and, by extension, its phylogenetic and ecological histories. We resolve these issues and use phylogenetic criteria to show that *T. pseudonana* is more appropriately classified by its original name, *Cyclotella nana* Hustedt.

## Results

### The phylogeny and evolutionary ecology of *Thalassiosira pseudonana*

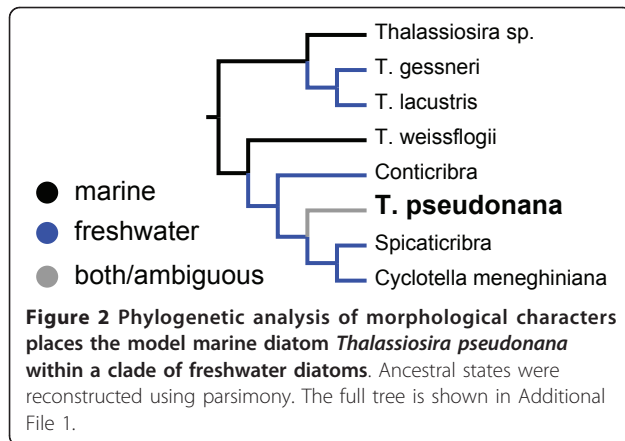
A combined phylogenetic analysis of two chloroplast (*psbC* and *rbcL*) and two nuclear (*SSU* and partial *LSU* rDNA) genes strongly and unambiguously resolved the phylogenetic position of *T. pseudonana* as sister to a clade of marine and freshwater species in the genus *Cyclotella* (Figure 1). This clade includes *C. meneghiniana*, which has been cited as an exemplar cosmopolitan freshwater diatom [21], and *C. tecta*, which is the nomenclatural type of the genus *Cyclotella* (Figure 1). The phylogeny also shows that members of the genus *Thalassiosira* are distributed across 10 different lineages within the Thalassiosirales (Figure 1). Among these, the lineages that include *T. pseudonana* and *T. nordenskiöldii* (the nomenclatural type of the genus *Thalassiosira*) are only distantly related (Figure 1).

We extended a previous morphologically based phylogenetic analysis of Thalassiosirales [22] to include *T. pseudonana*, *C. meneghiniana*, and two recently described genera, *Conticribr*a and *Spicaticribr*a [23,24], both of which have morphological features that suggest a close relationship to the *T. pseudonana*+*C. meneghiniana* clade. The full morphological tree is shown in Additional File 1. Like the molecular phylogeny, morphological data also resolve *T. pseudonana* into a clade with *C. meneghiniana* (Figure 2). *Conticribr*a *tricircularis*, which is known only from freshwaters [24], is sister to this clade (Figure 2).



**Figure 1** Phylogeny of the diatom order Thalassiosirales based on a Bayesian analysis of four concatenated genes. Pie graphs

at internal nodes show the relative maximum likelihood support for the inferred ancestral habitat type, and asterisks show that the more strongly supported ancestral habitat type is significantly better than the alternative. Arrows represent inferred marine-to-freshwater (blue) and freshwater-to-marine (white) colonization events. Dashed lines identify nodes with <0.95 Bayesian posterior probability support, and lineages containing potentially strong candidates for alternative model marine diatoms are marked with "M." *Cyclotella tecta* and *Thalassiosira nordenskiöldii* are the nomenclatural types ("type") for their respective genera. Genus abbreviations are: *Bacterosira* (B), *Cyclotella* (C), *Cyclostephanos* (Cs), *Detonula* (D), *Discostella* (Di), *Lauderia* (L), *Minidiscus* (M), *Porosira* (P), *Shionodiscus* (Sh), *Skeletonema* (S), *Stephanodiscus* (St), and *Thalassiosira* (T). The figure is modified from ref. [25].



Molecular phylogenetic analyses included both marine and freshwater strains of *T. pseudonana*, and these always formed a strongly supported clade [25]. The close relationship of these strains to *T. pseudonana* strain CCMP1335, which had its genome sequenced [4], is supported by their near-identical chloroplast *psbC* and *rbcl* genes and nuclear *SSU* and partial *LSU* rDNA genes (Additional file 2). Maximum likelihood reconstructions show that the common ancestor of the clade that includes *T. pseudonana*, *C. meneghiniana*, and *C. tecta* was most likely a freshwater diatom (Figure 1). Although the proportional likelihood strongly supports this conclusion (0.76 vs. 0.24), the difference is not statistically significant (Figure 1). However, morphological data place the monotypic freshwater genus *Conticribra* as sister to the *T. pseudonana*+*C. meneghiniana* clade, which unambiguously optimizes the common ancestor of the *T. pseudonana*+*C. meneghiniana* clade as freshwater in this analysis (Figure 2). Finally, the common ancestor of the two *T. pseudonana* strains was likely freshwater as well (Figure 1).

#### The identity of *Thalassiosira pseudonana*

The combination of a relatively nondescript morphology and a series of three name changes over the years [26-29] has led to some uncertainty about the identity of *T. pseudonana* (Additional file 3). Several species are frequently confused with *T. pseudonana*, and two of these, *T. guillardii* and *T. oceanica*, were initially included under a broader concept of *T. pseudonana* (Additional file 4; ref. [30]). Resolution of these taxonomic and nomenclatural uncertainties required observation of the original sample (the "type material") from which *T. pseudonana*—originally named *Cyclotella nana*—was described (Additional file 5; ref. [29]).

Several small Thalassiosirales were found in the *C. nana* type material (Additional file 6), but the most common small diatom encountered matches both the original

description of *C. nana* [29] and the traditional concept of *T. pseudonana* (Figure 3; refs. [28-34]). All of these diatoms, and those used for phylogenetic reconstruction (Figure 1) and genome sequencing [4], are small (less than 10  $\mu\text{m}$  diameter), circular, radially symmetric diatoms with 0-3 central-area strutted processes, numerous marginal-area strutted processes with three satellite pores each, and a labiate process situated between two marginal-area strutted processes (Figure 3 and Additional file 7). Ultrastructural features of the strutted processes are phylogenetically informative [25], and the strutted processes of all these diatoms have prominent, raised cowlings around the satellite pores and a more-or-less prominent siliceous ridge (opercle) on the central strutted process tube, situated directly above the corresponding satellite pore (Figure 3 and Additional file 7).

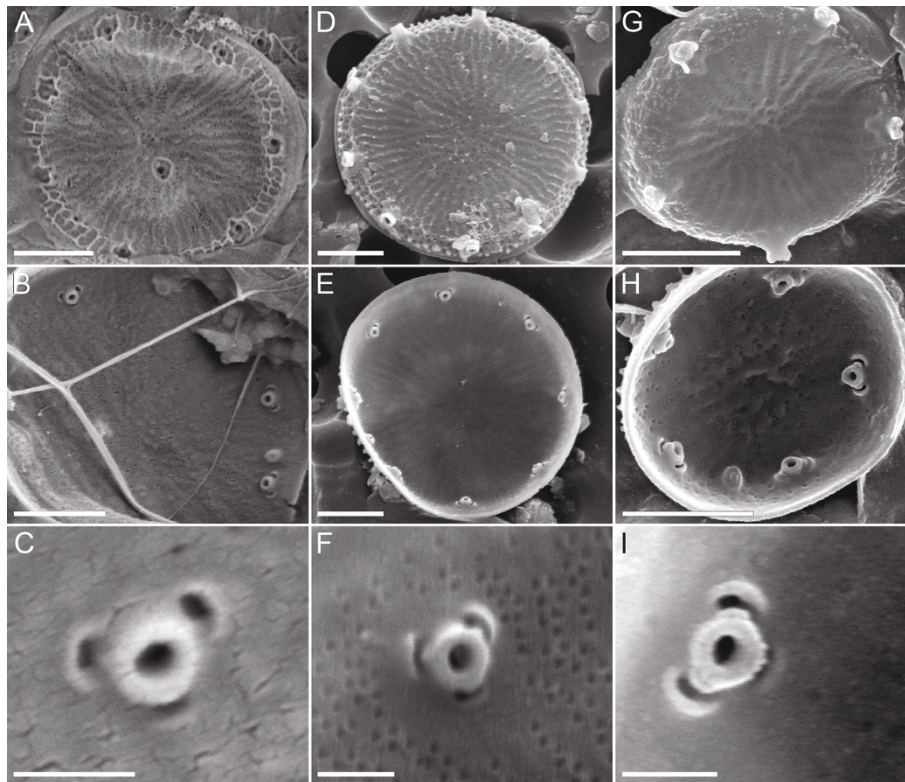
Taken together, molecular and morphological evidence lead us to conclude that the model *T. pseudonana* strain CCMP1335 [4] and the culture strains used in molecular phylogenetic analyses (Figure 1) are all conspecific with specimens originally described as *Cyclotella nana* (Additional file 4).

## Discussion

### Robustness of phylogenetic results and ancestral reconstructions

Our conclusions about the ancestry of *T. pseudonana* rest primarily on the assumption that our analyses have accurately resolved its position within the broader Thalassiosirales phylogeny. As suggested by the numerous taxonomic and nomenclatural uncertainties (Additional files 3 and 4), *T. pseudonana* has gross morphological similarities to species of *Thalassiosira*, *Cyclotella*, and *Discostella*. In fact, *T. pseudonana* is commonly confused with several species of *Discostella* and *Thalassiosira* (viz., the purely freshwater species *D. pseudostelligera* and the purely marine species *T. guillardii* and *T. oceanica*). We included each of these species in our molecular dataset, and they all resolved well away from *T. pseudonana* (Figure 1). *Cyclotella* and *Thalassiosira* are especially large and morphologically diverse genera, though years of monographic research have led to numerous informally recognized morphological groups within each of them [34-43]. Our molecular dataset includes at least one representative from each of the informally designated groups within both *Thalassiosira* and *Cyclotella*. By sampling much of the known range of morphological diversity within these two genera, we have included many of the lineages within the Thalassiosirales phylogeny where one might predict *T. pseudonana* to fall.

The molecular dataset ultimately resolved *T. pseudonana* as sister to a clade that includes the *C. meneghiniana* species complex and the nomenclatural type of the genus *Cyclotella*, *C. tecta*. Comparing phylogenies



**Figure 3 Scanning electron micrographs of three ecologically diverse representatives of *Thalassiosira pseudonana*.** (A-C) Marine culture strain CCMP1335 whose genome was sequenced; (D-F) freshwater specimens from the original type collection for the species from the River Wümme, Germany; (G-I) freshwater culture strain ETC1 from Lake Erie, Michigan, used in molecular phylogenetic analyses (Figure 1). The first and second rows show the cell exterior and interior, respectively (scale bar = 1  $\mu$ m), and the third row shows the interior ultrastructure of the strutted process (scale bar = 200 nm).

derived from morphological and molecular datasets is a powerful way to detect phylogenetic incongruence, or likewise, to strengthen an existing phylogenetic hypothesis based on just one of the two data types [44]. Despite their different and largely non-overlapping taxon sampling schemes, the molecular and morphological datasets were congruent in their placement of *T. pseudonana* as sister to *Cyclotella* (Figures 1 and 2). Moreover, there was also congruence between morphology and molecules for the larger set of taxa common to both datasets, viz: (*T. gessneri*, (*T. weissflogii*, (*T. pseudonana*, *C. meneghiniana*))).

Our habitat codings were based on the habitat from which each culture originally was isolated. Although an individual culture strain might not capture the full range of genetic and phenotypic variability of its species, coding a culture strain by its natural habitat is conceptually similar to the common practice of representing a species in phylogenetic analyses with gene sequences from a single individual. *Thalassiosira pseudonana* can tolerate a wide range of salinities [30], so we could have coded each of the strains in our analyses as simply “euryhaline.” For our

purposes, however, individually coding each strain according to its natural habitat should have been more conservative, in that it allowed for a marine ancestral state reconstruction for both *T. pseudonana* and the nodes immediately surrounding it.

Although future data might show that some of the *T. pseudonana* strains considered here represent different biological species, it is not clear that those species would necessarily resolve along marine-freshwater lines. The finding by Guillard and Ryther [30] that three different *T. pseudonana* clones (3H, 5A and e.p.) maintained high growth rates from 0.5-37‰ salinity supports the hypothesis that *T. pseudonana* is, in fact, a single species that tolerates a wide range of salinities. Finally, the reconstruction of a freshwater ancestor for *T. pseudonana* (Figure 1) applies regardless of whether marine and freshwater strains are considered the same, or different, species.

To summarize, phylogenetic analyses place *T. pseudonana* as sister to a predominately freshwater clade of diatoms in the genus *Cyclotella*. The congruence between the molecular and morphological datasets provides especially strong support for this result [44]. Ancestral state

reconstructions showed that the common ancestor of this clade was either unequivocally freshwater (morphological data, parsimony analysis) or likely freshwater (molecular data, likelihood analysis). Like any hypothesis, the results are potentially subject to change as new data become available or different character codings are used, but with respect to *T. pseudonana*, phylogenetic results and ancestral state reconstructions appear to be at least moderately robust to taxon sampling, data type, and optimality criterion.

### Is *Thalassiosira pseudonana* a good model for marine diatoms?

The tremendous importance of marine diatoms in global carbon fixation and marine food webs understandably compelled Armbrust et al. [4] to choose a marine diatom as the first for whole-genome sequencing [7]. *Thalassiosira pseudonana* belongs to the large and predominantly marine genus *Thalassiosira* and so was reasonably considered representative of that genus and of marine diatoms more broadly [7]. Subsequent phylogenetic analyses showed, however, that members of the genus *Thalassiosira* are spread across some 10 distinct evolutionary lineages (Figure 1). The extent of independent, unshared evolutionary history distinguishing these 10 lineages from one another is such that no single model species can possibly capture all of the diverse ecological, metabolic, and genomic properties of “*Thalassiosira*”—a prediction increasingly borne out by experimental and genomic data [45-47]. Of course, no one would expect uniformity across such a broad range of species diversity, but their shared classification in the genus *Thalassiosira* falsely suggests that the taxa in these 10 lineages constitute a more biologically coherent group than the phylogeny reveals them to be (Figure 1). The persistence of this, or any, misinformative classification represents a failure by systematists—ourselves included—to provide a phylogenetically based, and therefore biologically informative, alternative. Such an alternative would facilitate, for example, ecologically based selection of model species.

Salinity preference provides a glaring example of a trait that varies considerably across the 10 lineages of *Thalassiosira*, and *Thalassiosirales* as a whole (Figure 1). With a distribution that spans both marine and freshwater habitats, *T. pseudonana* embodies this variation. The evolutionary history of *Thalassiosirales* includes just a few major freshwater diversifications [25], and *T. pseudonana* marks an early divergence in one of them (Figure 1). In fact, phylogenetic analyses and formal mapping of habitat preference onto phylogenetic trees show that, 1) *T. pseudonana* is part of a large clade that is likely ancestrally freshwater (Figures 1 and 2), and 2) as a species, *T. pseudonana* is likely ancestrally freshwater as well (Figure 1). If so, these data suggest that marine strains of *T. pseudonana*

represent recent recolonizations of higher salinity habitats by a derived freshwater ancestor (Figures 1 and 2).

Parker et al. [20] keenly raised the question as to how well our current selection of model microalgae represent their corresponding dominant forms in the marine environment. The data presented here suggest that the substantial freshwater component of *T. pseudonana*'s phylogenetic history might confound its use of as a model for marine diatoms. For example, there is great interest in understanding how diatoms sequester, store, and use iron because it limits their growth over vast offshore regions of the world's oceans [14,15,46,47]. By contrast, iron generally does not limit diatom growth in freshwater [48] and coastal ecosystems [49]. Experimental data show that coastal marine strains of *T. pseudonana* and *T. weissflogii* require more iron to maintain a maximal growth rate than a marine strain of the pennate diatom, *Phaeodactylum tricornerutum*, and the oceanic diatom, *T. oceanica*, respectively [14,47]. As currently understood, these differences reflect either vastly different iron uptake [14] and storage [15] architectures between entirely different classes of diatoms (pennates vs. non-pennates), or slight modifications of shared iron uptake [46] or photosynthetic [47] architectures between closely related species. Some of these differences might, at least in part, reflect that *T. pseudonana* descended from a freshwater ancestor that experienced different (perhaps relaxed) constraints on its iron uptake and utilization machinery. Extending studies like that of Kustka et al. [14] to include strictly freshwater pennate and non-pennate diatoms along with strictly marine pennate and non-pennates might help tease apart the relative importance of shared history versus shared ecology in the evolution of iron metabolism in diatoms. In this context, “strictly” refers to diatoms that occur exclusively in either marine or freshwaters and whose immediate ancestor shared a similar distribution (e.g., Figure 1, “M”).

Among the several hundred species of *Thalassiosirales*, which might provide a more representative model for marine diatoms? The phylogeny provides a powerful, predictive guide for selecting candidates. In this case, one might first consider the five strictly marine clades (Figure 1, “M”) and then winnow down the candidate pool based on practical (e.g., genome size and amenability to cell culture) and ecological (e.g., oceanic vs. offshore) criteria.

### What is *Thalassiosira pseudonana*?

The diatom originally described as *Cyclotella nana* from the River Wümme has also gone by the names *T. pseudonana* [28], *C. pseudonana* [27], and most recently, *Discostella nana* [26] (Additional file 3). Like grammar, common usage tends to prevail, and this diatom became

universally known as *T. pseudonana*. Importantly, none of the name changes was based on direct observations of the type material, and none either had [27,28] or took advantage of [26] the insights of a strongly supported phylogenetic hypothesis for the Thalassiosirales [25]. A combination of evidence (Figure 3, Additional files 3 and 4) shows that the diatom originally described by Hustedt [29] as *C. nana* corresponds to the traditional concept of *T. pseudonana* [29-34]. Furthermore, phylogenetic analyses show that *T. pseudonana* is part of a strongly supported clade that includes *C. tecta*, which is the nomenclatural type of the genus *Cyclotella* (Figure 1). By contrast—short of creating a genus that includes nearly the whole of Thalassiosirales—a genus that would include both *T. pseudonana* and *T. nordenskioeldii* (the type species of *Thalassiosira*) cannot be reconciled with the phylogeny (Figure 1). We are therefore compelled to resurrect the original name of *T. pseudonana*, *Cyclotella nana* [29], and deprecate *T. pseudonana* [28], *C. pseudonana* [27], and *D. nana* [26] as synonyms.

## Conclusions

Publication of the *T. pseudonana* genome established this species as a model for experimental and genomic studies of diatoms [4], virtually all of which treat *T. pseudonana* as a marine diatom. Given the central roles of marine diatoms in global primary production, marine food webs, and the biogeochemical cycling of important nutrients, there is much to gain in understanding how marine diatoms interact with their environment. This understanding will come in large part from the development and study of model organisms [20] whose traits invariably have been shaped by their phylogeny. Phylogenetic analyses of both morphological and molecular data show that *T. pseudonana* likely descended from a freshwater ancestor. In some cases, this unusual history might confound extrapolations to strictly marine diatoms. Interestingly, the other diatom with a fully sequenced genome, *P. tricornutum*, also occurs in freshwater, brackish and marine habitats [50] and so might not be an ideal ecological model for marine diatoms either [20]. Additional genomes from ecologically diverse diatoms will bear these issues out and show, for example, whether the peculiar evolutionary histories of *T. pseudonana* and *P. tricornutum* account for some portion of the unusually large genomic divergence between the two species [6].

With few exceptions, diatoms are generally classified into genera that are uniformly marine or freshwater in distribution [51]. Although originally described from a predominantly freshwater river and classified in what is traditionally considered a freshwater genus (*Cyclotella*), an unfortunate series of nomenclatural changes ultimately landed *T. pseudonana* in a predominantly marine

genus. Although the full extent to which *T. pseudonana*'s name overshadowed the nuances of its ecology is a matter of speculation, *T. pseudonana* highlights the continued importance of taxonomy and systematics in the post-genomic era and echoes a view espoused by Linnaeus some 260 years ago in his landmark botanical text, *Philosophia Botanica*: "If you do not know the names of things, the knowledge of them is lost too." Beyond its name, a better appreciation of the complex phylogenetic and natural histories of *T. pseudonana* has the potential to shape and improve our understanding of diatom ecology and evolution more generally.

## Methods

We examined isolectotype material for *C. nana* (= *T. pseudonana*) to resolve several taxonomic and nomenclatural uncertainties (Additional files 3, 4 and 5). The sample is sediment collected by Friedrich Hustedt [29] from the River Wümme near Bremen, Germany, and corresponds to lectotype slide BRM 380/36 from the diatom collection at the Alfred Wegener Institute (Additional file 5).

All diatom samples were soaked in 30% hydrogen peroxide overnight to dissolve organic matter, then rinsed with distilled water several times and concentrated onto filter pads. Dried filter pads were affixed to scanning electron microscope (SEM) stubs with double-sided adhesive carbon discs, and coated with 15 nm of Iridium using a Cressington 208 Bench Top Sputter Coater. SEM observations were made with a Zeiss Supra 40 VP.

Alverson et al. [25] used two chloroplast (*psbC* and *rbcL*) and two nuclear genes (*SSU* and partial *LSU* rDNA) to reconstruct the phylogeny of Thalassiosirales. The 82-taxon matrix was nearly complete, with one of the four genes missing for just three taxa [25]. The final tree (Figure 1) was based on a Bayesian analysis of all four concatenated genes (5,102 characters total). The protein-coding *psbC* and *rbcL* genes were treated as a single marker, with first and second codon positions (GTR + G + I) modeled separately from third codon positions (GTR + G + I) [52]. Separate GTR + G + I models were applied to the *LSU* rDNA gene and *SSU* rDNA loops, and the Doublet + G + I model was applied to the *SSU* rDNA stems [25]. Additional information about the data matrix, partitions, and exact model specifications can be found in the publicly available data file (identifier doi:10.5061/dryad.8661 at <http://datadryad.org/>). We performed four independent Bayesian runs, each of which used four Markov chains and was run for a total 40 million generations. The *slide* and *cump* analyses in the AWTY diagnostic software tool [53] were used to assess the stationarity of each run, and the AWTY *compare* analysis was used to determine whether the stationary phases of the four independent runs had sampled

from the same posterior distribution. The latter analysis showed that that one of the four runs sampled a slightly different posterior distribution than the other three runs, so the final consensus tree (Figure 1) was based on the combined posterior distributions of the three similar runs.

Habitat (marine or freshwater) was scored based the natural provenance of the culture. The collection site for each culture is listed in Alverson et al. [25]. We scored strains collected from brackish and other low-salinity habitats as marine, thus biasing towards marine rather than freshwater ancestral reconstructions (all other things been equal). Maximum likelihood reconstructions used the Asymmetrical Markov k-state 2-parameter model as implemented in the Mesquite software package.

Several new freshwater species with gross morphological similarity to *T. pseudonana* and relatives have been described [23,24] since the publication of Alverson et al. [25]. We added these taxa to the morphological data matrix of Julius and Tanimura [22], and used the branch and bound search algorithm in PAUP\* to find the most parsimonious trees for this matrix. Character descriptions are available in Julius and Tanimura [22]. All data matrices are available from Dryad (<http://datadryad.org/>) using identifiers doi:10.5061/dryad.8661 and doi:10.5061/dryad.8663.

## Additional material

**Additional file 1: Strict consensus of eight most parsimonious trees from a phylogenetic analysis of 32 morphological characters for select *Thalassiosirales*.**

**Additional file 2: Pairwise differences among *Thalassiosira pseudonana* culture strains at four loci.**

**Additional file 3: The nomenclatural history of *Thalassiosira pseudonana*.**

**Additional file 4: The identity of *Thalassiosira pseudonana*.**

**Additional file 5: Hustedt's observations on the type locality of *Cyclotella nana* (= *T. pseudonana*).**

**Additional file 6: Scanning electron micrographs of thalassiosiroid diatoms in the type material (Additional file 4) of *Cyclotella nana* (= *Thalassiosira pseudonana*): *Stephanodiscus hantzschii* Grunow (A, B), *Stephanodiscus minutulus* (Kützing) Cleve & Möller (C, D), *Discostella pseudostelligera* (Hustedt) Houk & Klee (E-H), *Cyclotella striata* (Kützing) Grunow in Cleve & Grunow (I), *Cyclotella atomus* Hustedt (J), *Cyclotella meneghiniana* Kützing (K,L), *Cyclostephanos invisitatus* (Hohn & Hellerman) Theriot, Stoermer & Håkansson (M), *Shionodiscus* sp. (N), *Thalassiosira* sp. 1 (O), *Thalassiosira* sp. 2 (P). Scale bar = 2  $\mu$ M.**

**Additional file 7: Scanning electron micrographs showing exterior (A, B) and interior (C, D) views of *Thalassiosira pseudonana* (marine strain NEPC709) from Alverson et al. [25]. Scale bar = 2  $\mu$ M.**

## Acknowledgements

We thank Alex Wolfe, Klaus Valentin, Davide Pisani, and two anonymous reviewers for critical comments. AJA was supported by an NIH Ruth L.

Kirschstein NRSA Postdoctoral Fellowship (1F32GM080079-01A1). MLJ was partially supported by NSF grant DEB-0628554. ECT was supported by the Jane and Roland Blumberg Centennial Professorship in Molecular Evolution and NSF EF-0629410.

## Author details

<sup>1</sup>Indiana University, Department of Biology, 1001 East Third Street, Bloomington, IN 47405, USA. <sup>2</sup>Alfred Wegener Institute for Polar and Marine Research, Am Handelshafen 12, 27570 Bremerhaven, Germany. <sup>3</sup>St. Cloud State University, Department of Biological Sciences, 720 Fourth Avenue South, St. Cloud, MN 56301, USA. <sup>4</sup>The University of Texas at Austin, Texas Natural Science Center, 2400 Trinity Street, Austin, TX 78705, USA.

## Authors' contributions

AJA conceived the study, performed phylogenetic analyses, captured and analyzed SEM images, and drafted the manuscript. BB gathered, translated, and interpreted historical data on *Cyclotella nana* and helped in the interpretation of all results. MLJ gathered the morphological data used for phylogenetic analyses and helped in the interpretation of all results. ECT participated in study design and coordination, helped capture and analyze SEM images, and helped in the interpretation of all results. All authors read and approved the final manuscript.

Received: 20 December 2010 Accepted: 14 May 2011

Published: 14 May 2011

## References

1. Archibald JM: The puzzle of plastid evolution. *Curr Biol* 2009, **19**(2):R81-R88.
2. Mann DG, Droop SJM: Biodiversity, biogeography and conservation of diatoms. *Hydrobiologia* 1996, **336**(1-3):19-32.
3. Nelson DM, Treguer P, Brzezinski MA, Leynaert A, Queguiner B: Production and dissolution of biogenic silica in the ocean: revised global estimates, comparison with regional data and relationship to biogenic sedimentation. *Global Biogeochem Cy* 1995, **9**(3):359-372.
4. Armbrust EV, Berges JA, Bowler C, Green BR, Martinez D, Putnam NH, Zhou S, Allen AE, Apt KE, Bechner M, et al: The genome of the diatom *Thalassiosira pseudonana*: Ecology, evolution, and metabolism. *Science* 2004, **306**(5693):79-86.
5. Moustafa A, Beszteri B, Maier UG, Bowler C, Valentin K, Bhattacharya D: Genomic footprints of a cryptic plastid endosymbiosis in diatoms. *Science* 2009, **324**(5935):1724-1726.
6. Bowler C, Allen AE, Badger JH, Grimwood J, Jabbari K, Kuo A, Maheswari U, Martens C, Maumus F, Otillar RP, et al: The *Phaeodactylum* genome reveals the evolutionary history of diatom genomes. *Nature* 2008, **456**(7219):239-244.
7. Armbrust EV, Rynearson TA, Jenkins BD: Genomic insights into diatom evolution and metabolism. In *Genomics and Evolution of Microbial Eukaryotes*. Edited by: Katz LA, Bhattacharya D. Oxford: Oxford University Press; 2006:201-213.
8. Guillard RRL, Kilham P, Jackson TA: Kinetics of silicon-limited growth in the marine diatom *Thalassiosira pseudonana* Hasle and Heimdal (*Cyclotella nana* Hustedt). *J Phycol* 1973, **9**:233-237.
9. Nelson DM, Goering JJ, Kilham SS, Guillard RRL: Kinetics of silicic-acid uptake and rates of silica dissolution in marine diatom *Thalassiosira pseudonana*. *J Phycol* 1976, **12**(2):246-252.
10. Paasche E: Silicon and the ecology of marine plankton diatoms. I *Thalassiosira pseudonana* (*Cyclotella nana*) grown in a chemostat with silicate as limiting nutrient. *Mar Biol (Berl)* 1973, **19**:117-126.
11. Poulsen N, Chesley PM, Kroger N: Molecular genetic manipulation of the diatom *Thalassiosira pseudonana* (Bacillariophyceae). *J Phycol* 2006, **42**(5):1059-1065.
12. Bowler C, Vardi A, Allen AE: Oceanographic and biogeochemical insights from diatom genomes. *Annu Rev Mar Sci* 2010, **2**:333-365.
13. Parker MS, Armbrust EV: Synergistic effects of light, temperature, and nitrogen source on transcription of genes for carbon and nitrogen metabolism in the centric diatom *Thalassiosira pseudonana* (Bacillariophyceae). *J Phycol* 2005, **41**(6):1142-1153.
14. Kustka AB, Allen AE, Morel FMM: Sequence analysis and transcriptional regulation of iron acquisition genes in two marine diatoms. *J Phycol* 2007, **43**(4):715-729.

15. Marchetti A, Parker MS, Moccia LP, Lin EO, Arrieta AL, Ribalet F, Murphy MEP, Maldonado MT, Armbrust EV: Ferritin is used for iron storage in bloom-forming marine pennate diatoms. *Nature* 2009, **457**(7228):467-470.
16. Sumper M, Brunner E: Silica biomineralisation in diatoms: The model organism *Thalassiosira pseudonana*. *ChemBioChem* 2008, **9**(8):1187-1194.
17. Frigeri LG, Radabaugh TR, Haynes PA, Hildebrand M: Identification of proteins from a cell wall fraction of the diatom *Thalassiosira pseudonana*: Insights into silica structure formation. *Mol Cell Proteomics* 2005, **5**:182-193.
18. Mock T, Samanta MP, Alverson V, Berthiaume C, Robison M, Holtermann K, Durkin C, BonDurant SS, Richmond K, Rodesch M, et al: Whole-genome expression profiling of the marine diatom *Thalassiosira pseudonana* identifies genes involved in silicon bioprocesses. *P Natl Acad Sci USA* 2008, **105**(5):1579-1584.
19. Thamtrakoln K, Hildebrand M: Analysis of *Thalassiosira pseudonana* silicon transporters indicates distinct regulatory levels and transport activity through the cell cycle. *Eukaryot Cell* 2007, **6**(2):271-279.
20. Parker MS, Mock T, Armbrust EV: Genomic insights into marine microalgae. *Annu Rev Genet* 2008, **42**:619-645.
21. Finlay BJ, Monaghan EB, Maberly SC: Hypothesis: The rate and scale of dispersal of freshwater diatom species is a function of their global abundance. *Protist* 2002, **153**(3):261-273.
22. Julius ML, Tanimura Y: Cladistic analysis of plicated *Thalassiosira* (Bacillariophyceae). *Phycologia* 2001, **40**(2):111-122.
23. Johansen J, Kociolek P, Lowe R: *Spicatricibra kingstonii*, gen. nov. et sp. nov. (Thalassiosiraceae, Bacillariophyta) from Great Smoky Mountains National Park, USA. *Diatom Res* 2008, **23**(2):367-375.
24. Stachura-Suchoples K, Williams DM: Description of *Conticribra tricircularis*, a new genus and species of Thalassiosirales, with a discussion on its relationship to other continuous cribra species of *Thalassiosira* Cleve (Bacillariophyta) and its freshwater origin. *Eur J Phycol* 2009, **44**(4):477-486.
25. Alverson AJ, Jansen RK, Theriot EC: Bridging the Rubicon: Phylogenetic analysis reveals repeated colonizations of marine and fresh waters by thalassiosirid diatoms. *Mol Phylogenet Evol* 2007, **45**(1):193-210.
26. Chang TP, Chang-Scheider H: Zentrische kieselalgen in Kemptener seen [Centric diatoms in lakes of Kempten]. *Ber Deut Bot Ges* 2008, **78**:5-15.
27. Chang TP, Steinberg C: Identifizierung von nanoplanktischen Kieselalgen (Centrales, Bacillariophyceae) in der Rott und im Rott-Stausee (Bayern, Bundesrepublik Deutschland) [Identification of nanoplanktonic diatoms (Centrales, Bacillariophyceae) in River Rott and Rott Reservoir (Bavaria, F.R.G.)]. *Arch Protistenkd* 1989, **137**(2):111-129.
28. Hasle GR, Heimdal BR: Some species of the centric diatom genus *Thalassiosira* studied in the light and electron microscopes. *Beihefte zur Nova Hedwigia* 1970, **31**:543-581.
29. Hustedt F: Die Diatomeenflora des Flußsystems der Weser im Gebiet der Hansestadt Bremen [Diatom flora of the tributaries of the Weser near the city of Bremen]. *Abh Naturw Ver Bremen* 1957, **34**:181-440.
30. Guillard RRL, Ryther JH: Studies of marine planktonic diatoms. I *Cyclotella nana* Hustedt and *Detonula confervacea* (Cleve) Gran. *Can J Microbiol* 1962, **8**:229-239.
31. Belcher JH, Swale EMF: Species of *Thalassiosira* (Diatoms, Bacillariophyceae) in the plankton of English rivers. *Br Phycol J* 1977, **12**(3):291-297.
32. Hasle GR: The marine, planktonic diatoms *Thalassiosira oceanica* sp. nov. and *T. partheneia*. *J Phycol* 1983, **19**(2):220-229.
33. Hustedt F: Die Diatomeenflora der Unterweser von der Lesummündung bis Bremerhaven mit Berücksichtigung des Unterlaufs der Hunte und Geeste [Diatom flora of the lower Weser from the Lesum estuary to Bremerhaven, with consideration of the lower Hunte and Geeste]. *Veröff Inst Meeresforsch* 1959, **6**:13-176.
34. Lowe RL: Comparative ultrastructure of the valves of some *Cyclotella* species (Bacillariophyceae). *J Phycol* 1975, **11**(4):415-424.
35. Fryxell GA, Hasle GR: *Thalassiosira eccentrica* (Ehrenb.) Cleve, *T. symmetrica* sp. nov., and some related centric diatoms. *J Phycol* 1972, **8**:297-317.
36. Fryxell GA, Hasle GR: The genus *Thalassiosira*: some species with a modified ring of central strutted processes. *Beiheft zur Nova Hedwigia* 1977, **54**:67-98.
37. Fryxell GA, Hasle GR: The genus *Thalassiosira*: species with internal extensions of the strutted processes. *Phycologia* 1979, **18**(4):378-393.
38. Hasle GR: Some *Thalassiosira* species with one central process. *Norwegian Journal of Botany* 1978, **25**:77-110.
39. Hasle GR, Fryxell GA: The genus *Thalassiosira*: some species with a linear areola array. *Nova Hedwigia Beih* 1977, **54**:14-60.
40. Hasle GR, Lange CB: Freshwater and brackish water *Thalassiosira* (Bacillariophyceae) taxa with tangentially undulated valves. *Phycologia* 1989, **28**(1):120-135.
41. Håkansson H: A compilation and evaluation of species in the general *Stephanodiscus*, *Cyclostephanos* and *Cyclotella* with a new genus in the family Stephanodiscaceae. *Diatom Res* 2002, **17**(1):1-139.
42. Loginova LP: Classification of the diatom genus *Cyclotella*. In *Proceedings of the 10th International Symposium on Recent and Fossil Diatoms*. Edited by: Simola H, Koenigstein: Otto Koeltz Science Publishers; 1990:37-46.
43. Serieysson KK: *Cyclotella* species of late Miocene age from St. Bazile, France. In *Proceedings of the Sixth Symposium on Recent and Fossil Diatoms*. Edited by: Ross R, Koenigstein: Otto Koeltz Science Publishers; 1980:27-42.
44. Pisani D, Benton MJ, Wilkinson M: Congruence of morphological and molecular phylogenies. *Acta Biotheor* 2007, **55**(3):269-281.
45. von Dassow P, Petersen TW, Chepurnov VA, Armbrust EV: Inter- and intraspecific relationships between nuclear DNA content and cell size in selected members of the centric diatom genus *Thalassiosira* (Bacillariophyceae). *J Phycol* 2008, **44**(2):335-349.
46. Maldonado MT, Allen AE, Chong JS, Lin K, Leus D, Karpenko N, Harris SL: Copper-dependent iron transport in coastal and oceanic diatoms. *Limnol Oceanogr* 2006, **51**(4):1729-1743.
47. Strzepek RF, Harrison PJ: Photosynthetic architecture differs in coastal and oceanic diatoms. *Nature* 2004, **431**(7009):689-692.
48. Wetzel RG: Iron, sulfur, and silica cycles. *Limnology: Lake and River Ecosystems*. Third edition. San Diego: Academic Press; 2001, 289-331.
49. Sunda WG, Huntsman SA: Iron uptake and growth limitation in oceanic and coastal phytoplankton. *Mar Chem* 1995, **50**(1-4):189-206.
50. De Martino A, Meichenin A, Shi J, Pan KH, Bowler C: Genetic and phenotypic characterization of *Phaeodactylum tricornutum* (Bacillariophyceae) accessions. *J Phycol* 2007, **43**(5):992-1009.
51. Round FE, Sims PA: The distribution of diatom genera in marine and freshwater environments and some evolutionary considerations. In *Proceedings of the Sixth Symposium on Recent and Fossil Diatoms*. Edited by: Ross R, Hirschberg: Otto Koeltz Science Publishers; 1980:301-320.
52. Shapiro B, Rambaut A, Drummond AJ: Choosing appropriate substitution models for the phylogenetic analysis of protein-coding sequences. *Mol Biol Evol* 2006, **23**(1):7-9.
53. Wilgenbusch JC, Warren DL, Swofford DL: AWTY: A system for graphical exploration of MCMC convergence in Bayesian phylogenetic inference. 2004.

doi:10.1186/1471-2148-11-125

Cite this article as: Alverson et al.: The model marine diatom *Thalassiosira pseudonana* likely descended from a freshwater ancestor in the genus *Cyclotella*. *BMC Evolutionary Biology* 2011 **11**:125.

Submit your next manuscript to BioMed Central and take full advantage of:

- Convenient online submission
- Thorough peer review
- No space constraints or color figure charges
- Immediate publication on acceptance
- Inclusion in PubMed, CAS, Scopus and Google Scholar
- Research which is freely available for redistribution

Submit your manuscript at  
www.biomedcentral.com/submit

